

DMAF Status Update

August 2022



Outline

1. Recent Highlights
2. Utility Removals and Relocations
3. Construction Update
4. Freshet Update
5. Schedule Updates
6. Current Challenges



1. Recent Highlights

- A. Successfully drilled under the Kettle River and commissioned new 12" sanitary line
- B. Excavated and formed footings for 5th St floodwall by Selkirk
- C. Rerouted traffic through North Ruckle to allow 2nd St demountable wall construction
- D. New powerlines installed in North Ruckle and across Kettle River on 5th St
- E. North Ruckle dike utility crossings 90% removed
- F. North Ruckle dike under construction from 68th Ave bridge to Interfor

2. Utility Removals and Relocations

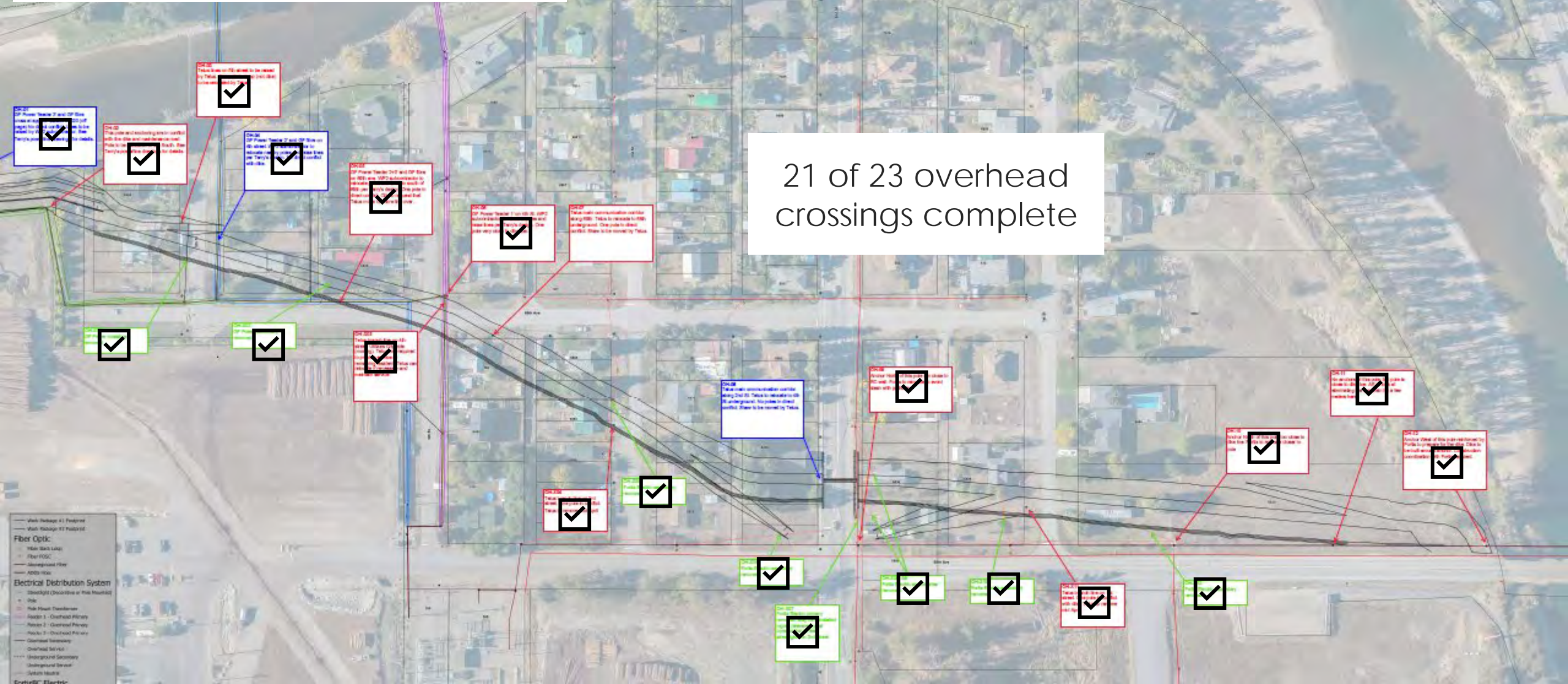
21 of 23 overhead crossings complete

The map displays a residential area with a river and various utility lines. A legend in the bottom left corner identifies symbols for Fiber Optic, Electrical Distribution System, and Electric. The map is overlaid with numerous callout boxes, each containing a checkmark and a description of a utility removal or relocation. The callouts are color-coded: red for removals and blue for relocations. The text '21 of 23 overhead crossings complete' is prominently displayed in the center of the map.

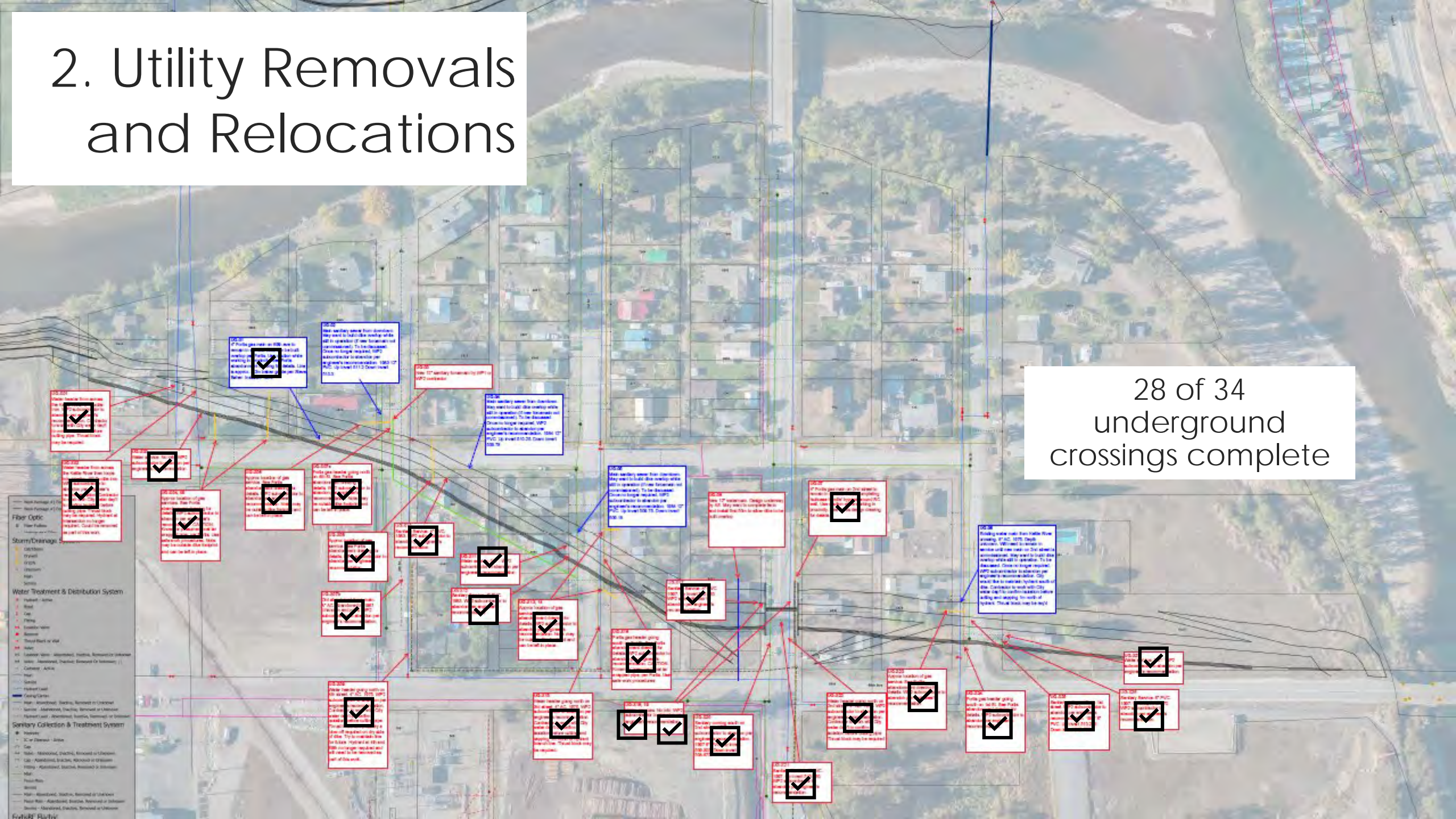
Legend:

- Fiber Optic:
 - Main Back Loop
 - Drop FOG
 - Grounded Fiber
 - ADDS-HSC
- Electrical Distribution System:
 - Standard Distribution or Risk Mounting
 - Shade
 - Sub-Station Transformer
 - Feeder 1 - Overhead Primary
 - Feeder 2 - Grounded Primary
 - Feeder 3 - Overhead Primary
 - Overhead Secondary
 - Overhead Service
 - Underground Secondary
 - Underground Service
 - System Neutral
- Electric:
 - Electric

21 of 23 overhead crossings complete



2. Utility Removals and Relocations





3. Construction Update

5th Street Flood Wall





3. Construction Update

4th Street Pump Station Cofferdam





3. Construction Update

Granby River





3. Construction Update

Riverside Stormwater





3. Construction Update

North Ruckle Dike



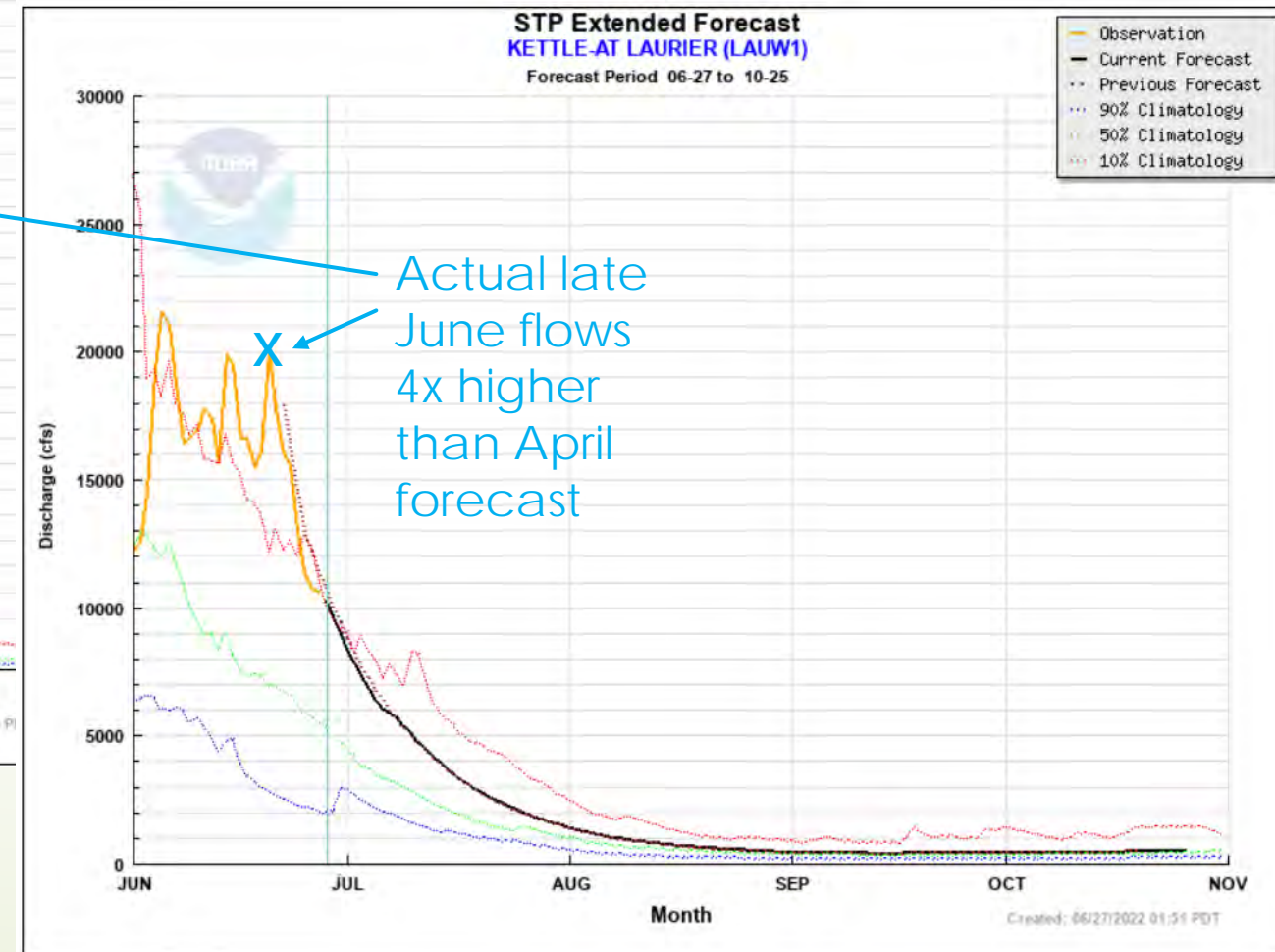
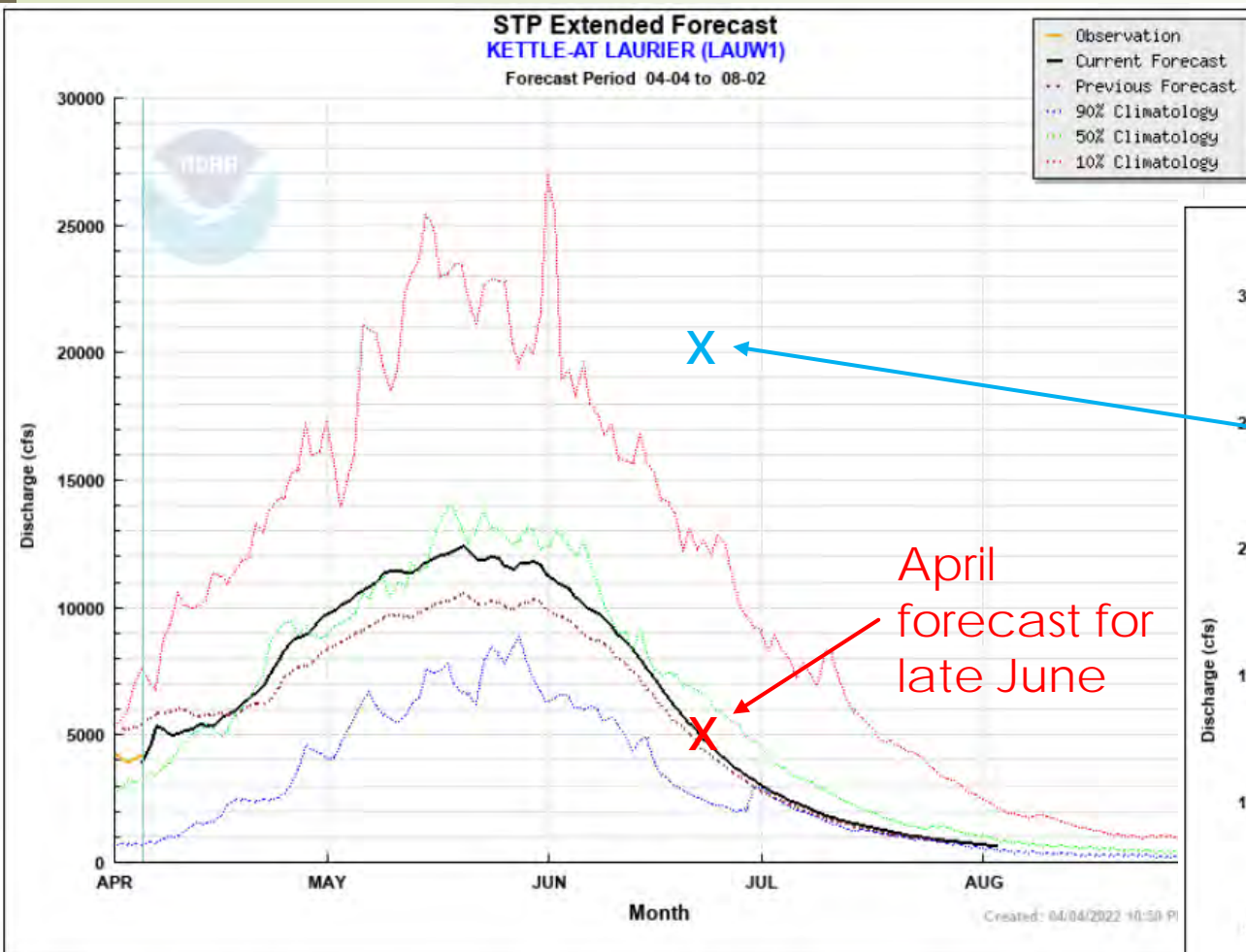


3. Construction Update

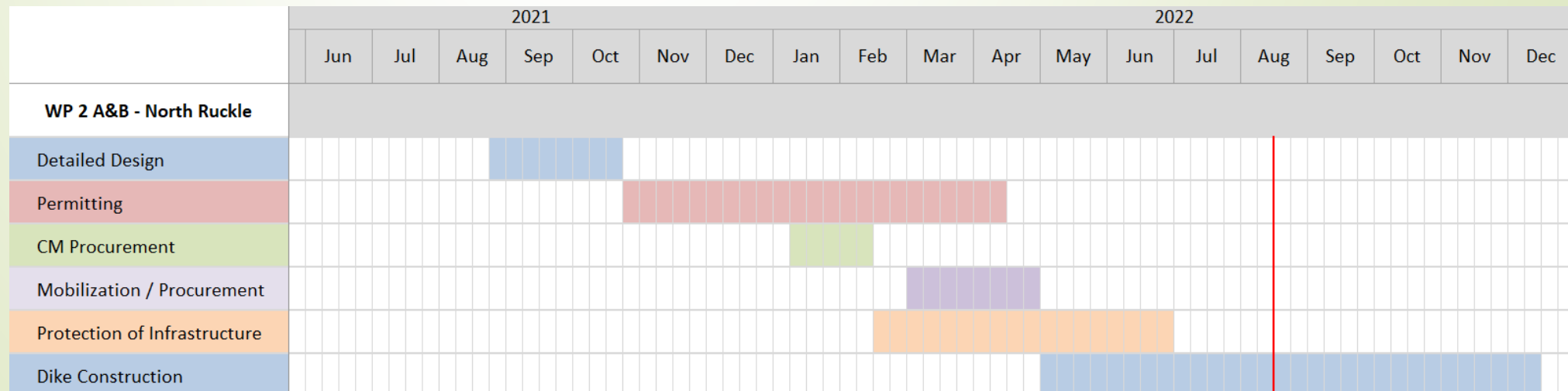
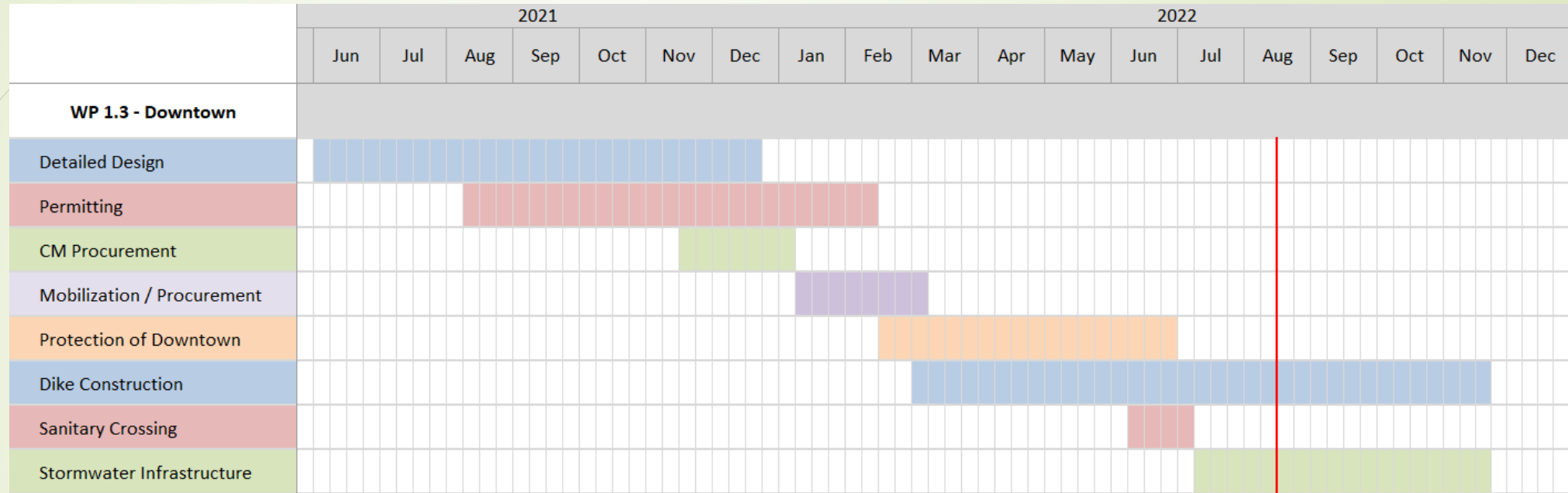
2nd Street Demountable Wall




4. Freshet Update



5. Schedule Updates





6. Current Challenges

- A. Discovery of multiple unidentified underground utilities
- B. Late freshet leading to higher groundwater later into summer
- C. Discovery of protected nesting birds in work zones
- D. Late freshet preventing in river work and pushing work beyond fish windows
- E. Sheet pile refusals during cofferdam installation
- F. Ongoing inflationary pressures and cost escalation in supply chain



Thank
you