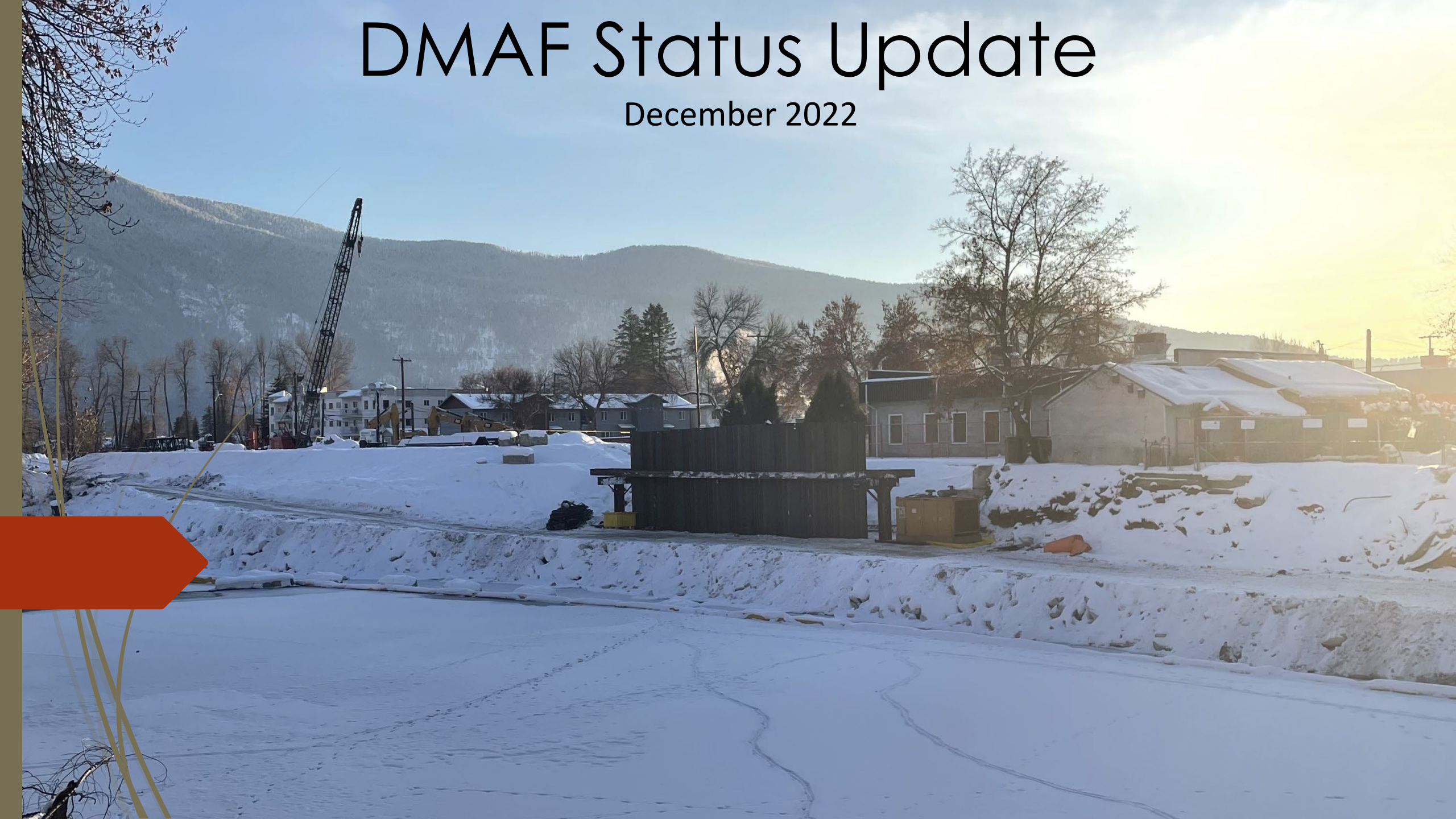


DMAF Status Update

December 2022



Outline

1. Recent Highlights
2. Permit Summary
3. Utility Removals and Relocations
4. WP1 Construction Update
5. WP2 Construction Update
6. Schedule Updates
7. Cost to Date and Forecasts
8. 2023 Workplan



1. Recent Highlights

- A. Poured large 5th St concrete floodwall
- B. Began concrete work on both pump stations
- C. Installed lock block wall for Kettle River trail
- D. Remediated oil contamination on Granby River, completed temp access road, and started sheet pile installation
- E. Installed majority of Interfor sheet pile dike
- F. Received 2nd St demountable floodwall
- G. Installed 500m of new 14" watermain

2. Permit Summary

Federal Permits

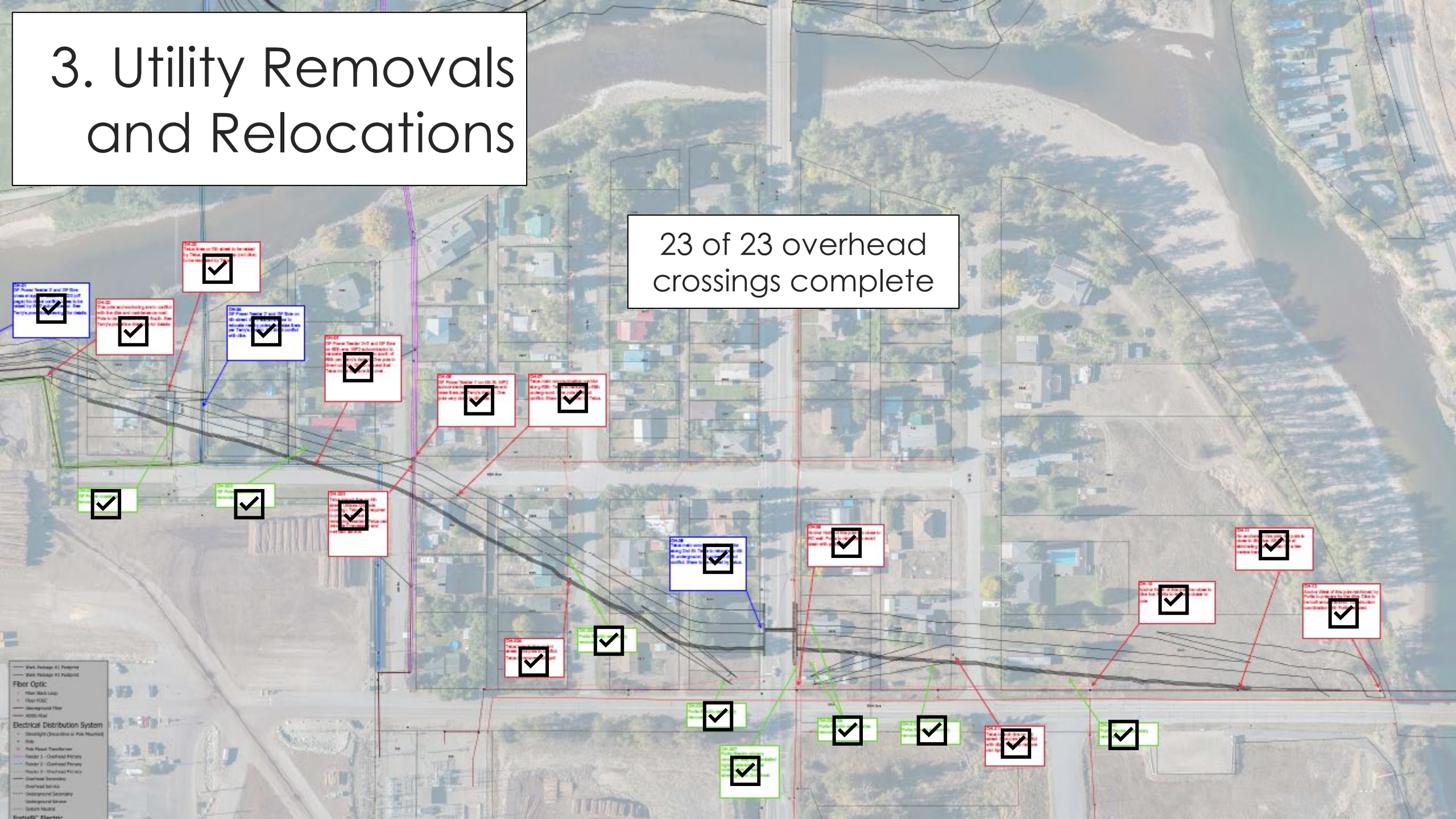
	Work Package 1	Work Package 2, a&b
Species at Risk Act (SARA)	Received	Received
DFO Authorization	WP1 and 2 Merged. Received Feb 9, 2022	

Provincial Permits

	Work Package 1	Work Package 2, a&b
Heritage Inspection Permit	Received for the program March 3, 2021	
Site Alteration Permit	Received Nov 17, 2021	N/A
Crown Land Tenure (License of Occupation)	Received Dec 8, 2021	Received Jan 21, 2022
Water Sustainability Act (WSA), Change Approval for Instream Work	Received in two parts, Jan 20 and Feb 3, 2022	Received Feb 28, 2022
WSA Fish Collection Permit	Received early Jan 2022	Received early Jan 2022
Dike Maintenance Act (DMA) Application	Received Jan 10, 2022	Received April 14, 2022
MoTI Right of Way at Highway 3 Bridge	Received April 8, 2022	N/A
License to Cut	Received Jan 19, 2022	Received Jan 19, 2022
River Access Road Permission	Granted Nov 18, 2021 Extended Feb 3, 2022	N/A

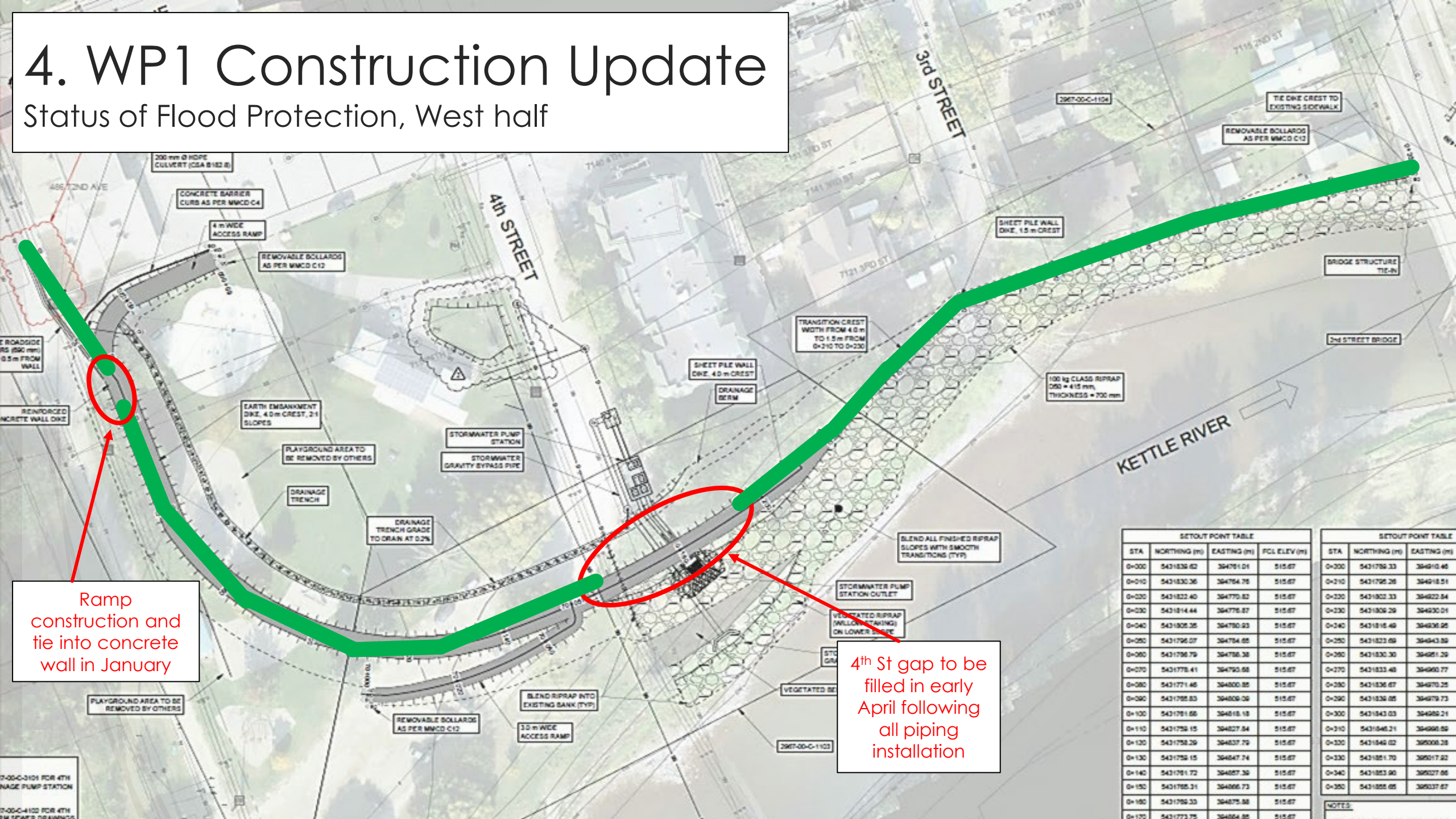
3. Utility Removals and Relocations

23 of 23 overhead crossings complete



4. WP1 Construction Update

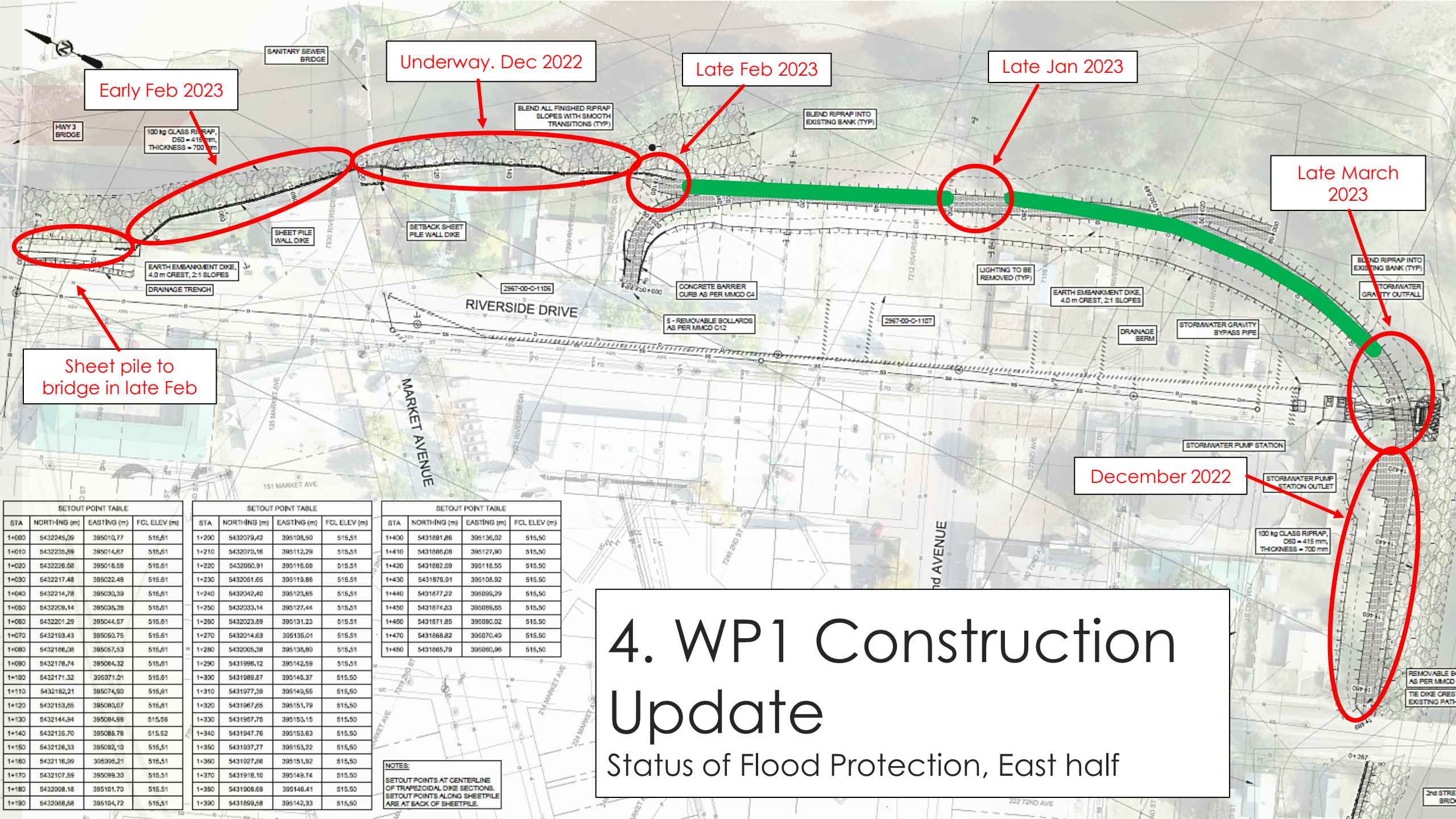
Status of Flood Protection, West half



Ramp construction and tie into concrete wall in January

4th St gap to be filled in early April following all piping installation

SETOUT POINT TABLE			
STA	NORTHING (m)	EASTING (m)	FCL ELEV (m)
0+000	5431836.62	364781.01	515.67
0+010	5431830.36	364784.76	515.67
0+020	5431822.40	364770.82	515.67
0+030	5431814.44	364776.87	515.67
0+040	5431805.35	364780.93	515.67
0+050	5431796.07	364784.85	515.67
0+060	5431786.79	364786.38	515.67
0+070	5431778.41	364790.68	515.67
0+080	5431771.46	364800.85	515.67
0+090	5431768.83	364809.06	515.67
0+100	5431761.68	364818.18	515.67
0+110	5431758.15	364827.84	515.67
0+120	5431758.29	364837.79	515.67
0+130	5431758.15	364847.74	515.67
0+140	5431761.72	364857.39	515.67
0+150	5431765.31	364866.73	515.67
0+160	5431768.32	364875.88	515.67
0+170	5431773.75	364884.85	515.67



Early Feb 2023

Underway. Dec 2022

Late Feb 2023

Late Jan 2023

Late March 2023

December 2022

Sheet pile to bridge in late Feb

SETOUT POINT TABLE			
STA	NORTHING (m)	EASTING (m)	FCL ELEV (m)
1+000	5432245.09	395010.77	515.51
1+010	5432235.89	395014.07	515.51
1+020	5432226.68	395018.08	515.51
1+030	5432217.48	395022.48	515.51
1+040	5432214.78	395030.39	515.51
1+050	5432208.14	395035.38	515.51
1+060	5432201.29	395044.67	515.51
1+070	5432193.43	395050.75	515.51
1+080	5432186.08	395057.53	515.51
1+090	5432178.74	395064.32	515.51
1+100	5432171.32	395071.01	515.51
1+110	5432162.21	395074.90	515.51
1+120	5432153.85	395080.07	515.51
1+130	5432144.84	395084.88	515.50
1+140	5432135.70	395088.78	515.52
1+150	5432126.33	395092.10	515.51
1+160	5432116.99	395095.21	515.51
1+170	5432107.89	395099.30	515.51
1+180	5432098.18	395101.70	515.51
1+190	5432088.58	395104.72	515.51

SETOUT POINT TABLE			
STA	NORTHING (m)	EASTING (m)	FCL ELEV (m)
1+200	5432079.42	395108.50	515.51
1+210	5432070.16	395112.29	515.51
1+220	5432060.91	395116.08	515.51
1+230	5432051.65	395119.86	515.51
1+240	5432042.40	395123.65	515.51
1+250	5432033.14	395127.44	515.51
1+260	5432023.89	395131.23	515.51
1+270	5432014.63	395135.01	515.51
1+280	5432005.38	395138.80	515.51
1+290	5431996.12	395142.59	515.51
1+300	5431986.87	395146.37	515.50
1+310	5431977.30	395149.55	515.50
1+320	5431967.85	395151.79	515.50
1+330	5431957.78	395153.15	515.50
1+340	5431947.76	395153.63	515.50
1+350	5431937.77	395153.22	515.50
1+360	5431927.86	395151.92	515.50
1+370	5431918.10	395149.74	515.50
1+380	5431908.69	395146.41	515.50
1+390	5431899.58	395142.33	515.50

SETOUT POINT TABLE			
STA	NORTHING (m)	EASTING (m)	FCL ELEV (m)
1+400	5431891.86	395136.02	515.50
1+410	5431886.08	395127.90	515.50
1+420	5431882.89	395118.55	515.50
1+430	5431878.91	395108.92	515.50
1+440	5431877.22	395099.29	515.50
1+450	5431874.23	395089.55	515.50
1+460	5431871.85	395080.02	515.50
1+470	5431868.82	395070.49	515.50
1+480	5431865.79	395060.96	515.50

NOTES:
SETOUT POINTS AT CENTERLINE OF TRAPEZOIDAL DIKE SECTIONS.
SETOUT POINTS ALONG SHEETPILE ARE AT BACK OF SHEETPILE.

4. WP1 Construction Update

Status of Flood Protection, East half



4. WP1 Construction Update

5th Street Flood Wall





4. WP1 Construction Update

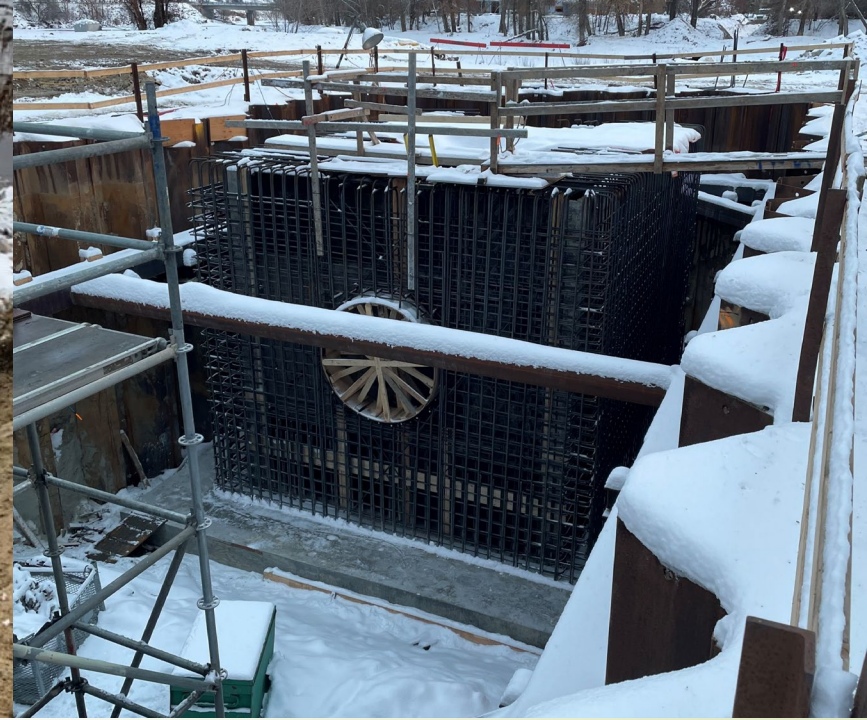
4th Street Pump Station



4. WP1 Construction Update

Kettle River Dike - Downtown





4. WP1 Construction Update

Riverside Pump Station



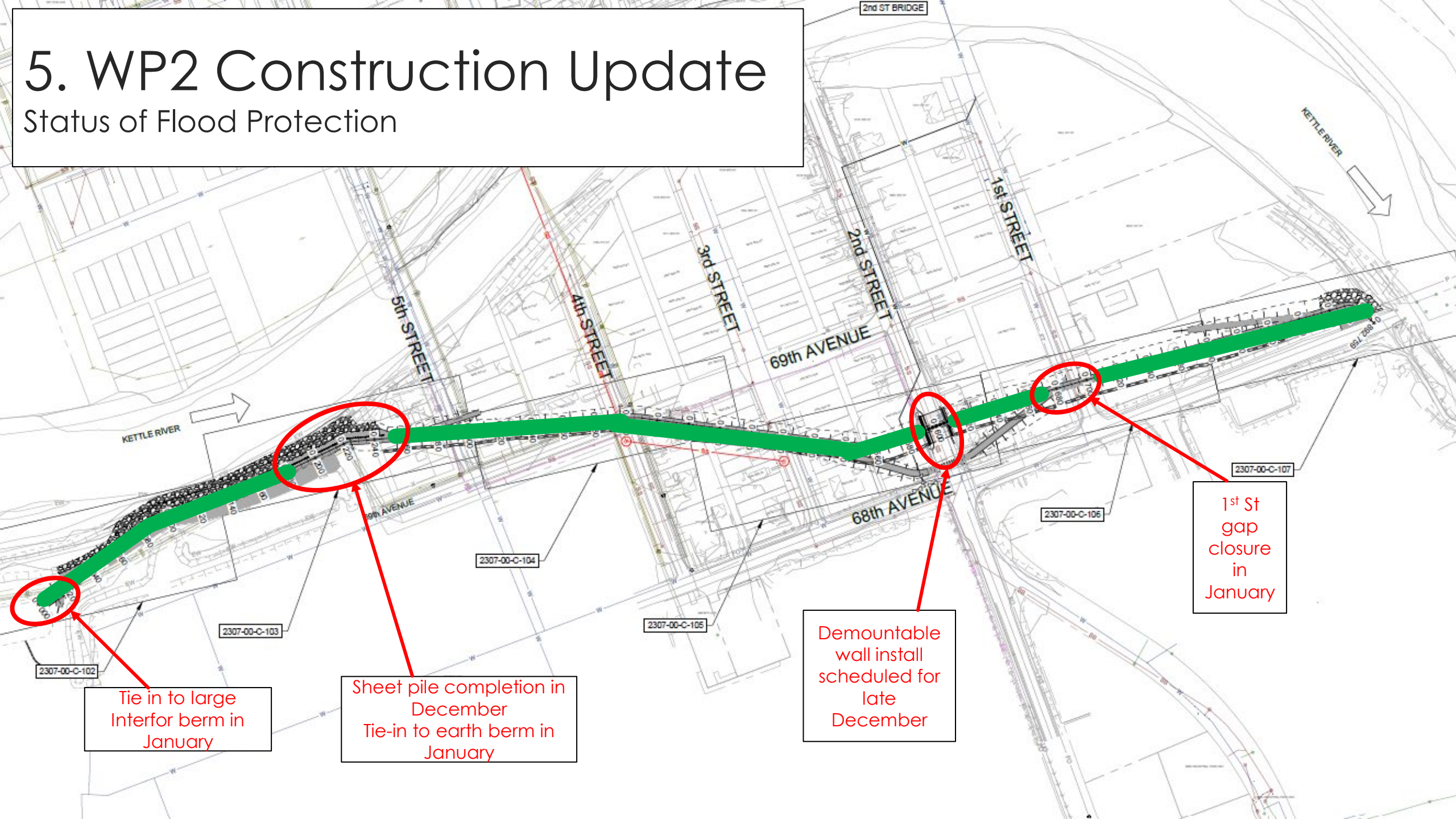
4. WP1 Construction Update

Granby River



5. WP2 Construction Update

Status of Flood Protection





5. WP2 Construction Update

North Ruckle Dike





5. WP2 Construction Update

2nd Street Demountable Wall





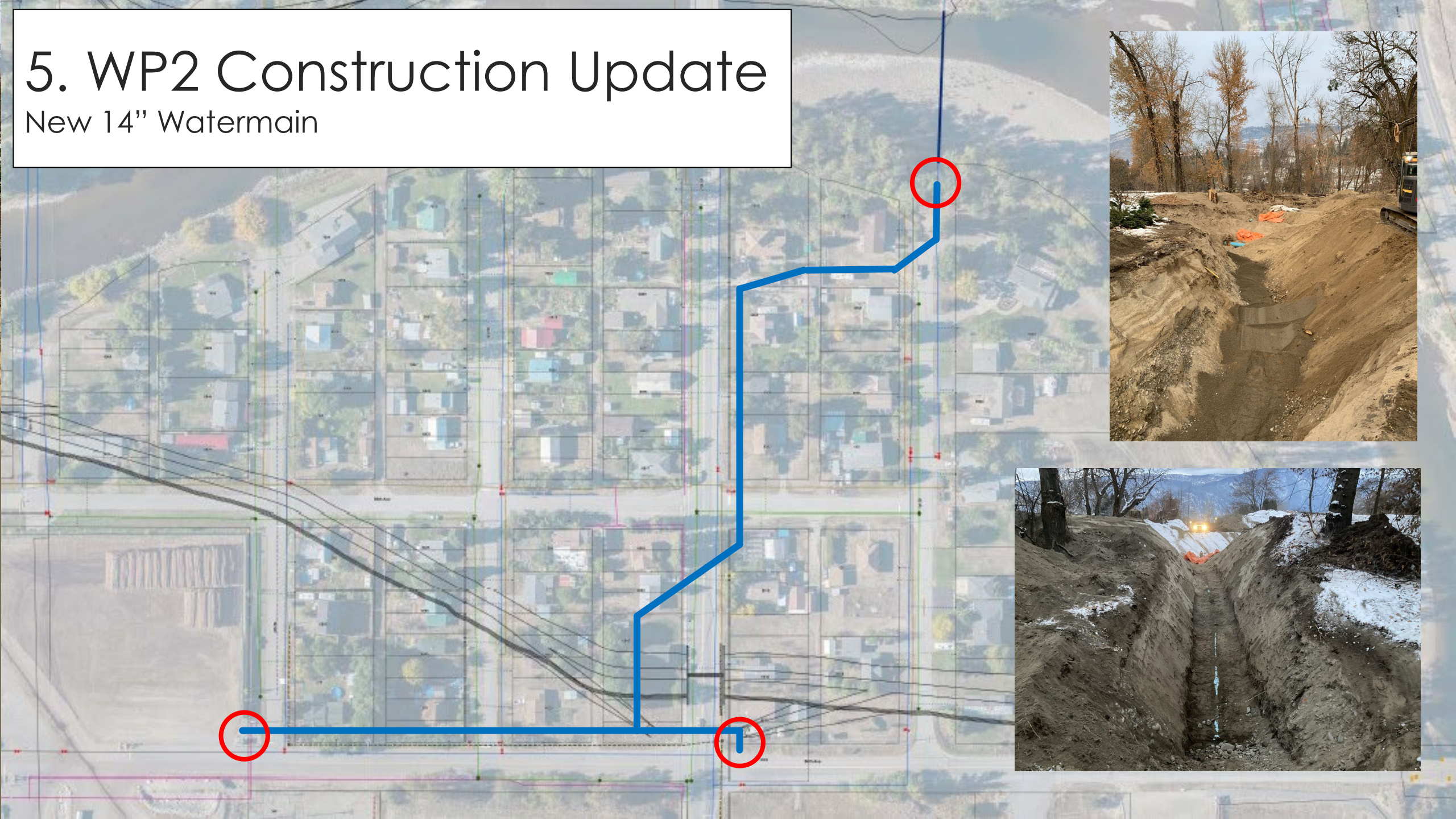
5. WP2 Construction Update

Interfor Sheet Pile Dike

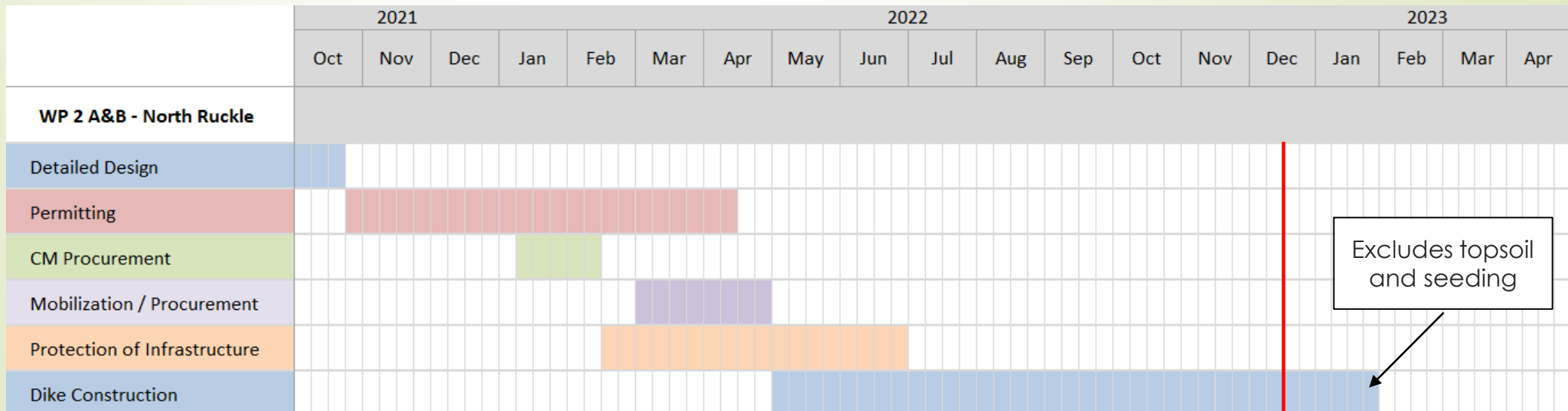
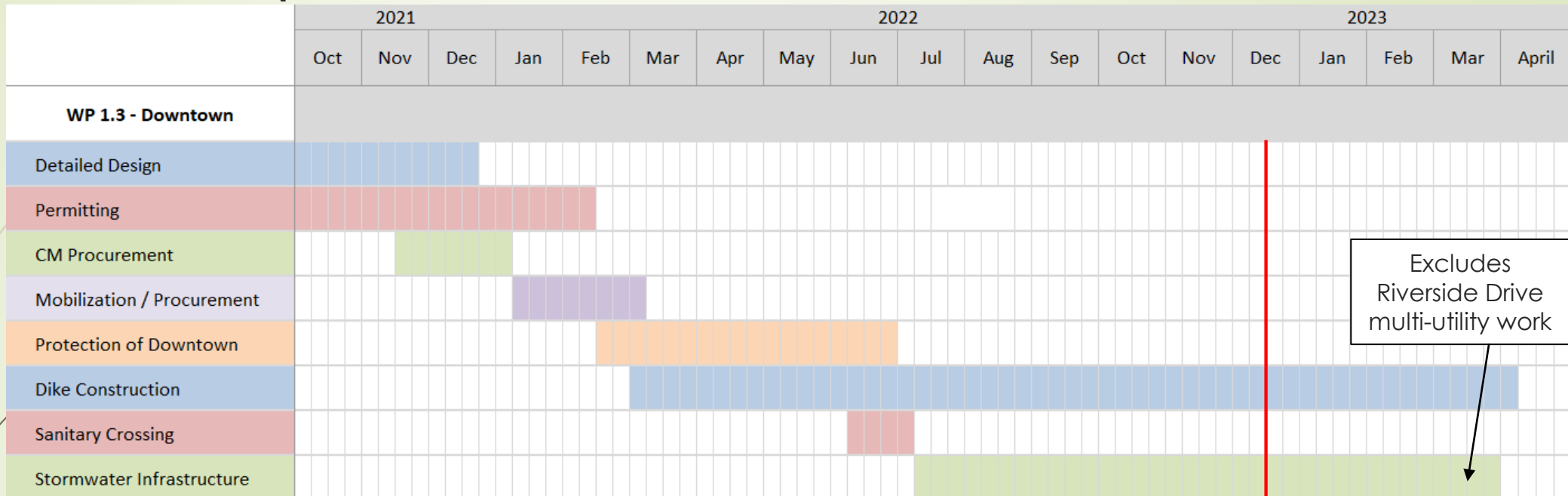


5. WP2 Construction Update

New 14" Watermain



6. Schedule Updates





Thank
you