

**THE CORPORATION OF THE CITY OF GRAND FORKS**  
**BYLAW NO. 2052**

**A Bylaw to dedicate Nature Parks**

=====

The Municipal Council for the Corporation of the City of Grand Forks, in an open meeting of Council, **ENACTS** as follows:

**1. Citation**

1.1 This bylaw may be cited as the “**Nature Park Bylaw No. 2052**”

**2. Definitions**

2.1 In this bylaw, unless the context otherwise requires:

“**Ecological Reserve**” means land used or intended to be used for the preservation of the environment or for scientific research and education pertaining to the studies in the inter-relationships between species and the behaviour of unique flora and fauna.

“**Wetland**” is land that is saturated with water long enough to promote wetland or aquatic processes as indicated by poorly drained soils, hydrophytic (water-tolerant) vegetation, and various kinds of biological activity which are adapted to a wet environment.

**3. Regulations**

3.2 The use, development and improvement of the said park must be that of an ecological reserve.

3.3 No person shall modify or cause to modify the hydrology, vegetation, or wildlife of the park in a way that diminishes the function of the park as a wetland or an ecological reserve.

**4. Schedules**

4.1 The lands shown outlined in bold on the Schedules listed below, attached to, and forming part of this bylaw, are dedicated as public parks:

Schedule ‘A’ – Johnson Flats Wetland Nature Park

Schedule ‘B’ – Observation Mountain Nature Park

Schedule ‘C’ – Grassland Nature Park

Schedule ‘D’ – Oxbow Nature Park

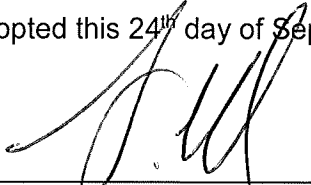
**5. Repeal**

5.1 The following bylaws and any amendments thereto, are hereby repealed:

- “**Johnson Flats Wetland Nature Park Bylaw No. 2035, 2016**”

Read a first, second, and third time by the Municipal Council this 4<sup>th</sup> day of September, 2018.

Adopted this 24<sup>th</sup> day of September, 2018.



\_\_\_\_\_  
Mayor Frank Konrad



\_\_\_\_\_  
Corporate Officer – Daniel Drexler

Schedule 'A' - Johnson Flats Wetland Nature Park

THAT PART OF BLOCK A OUTLINED  
IN GREEN ON PLAN B1193;  
DISTRICT LOT 382 SIMILKAMEEN  
DIVISION YALE DISTRICT PLAN 22

THAT PART OF DISTRICT LOT 382  
SHOWN OUTLINED RED ON PLAN  
B4892; SIMILKAMEEN DIVISION  
YALE DISTRICT

DL382, Plan KAP5814B pt shown on  
PL B5814

DL382, Plan KAP122, pt S of PL  
B4892, E of PL B1711, W of L 13  
BLK A PL 123 & N of 5 BLK 2 PL 122

 Nature Park



Entirety of:

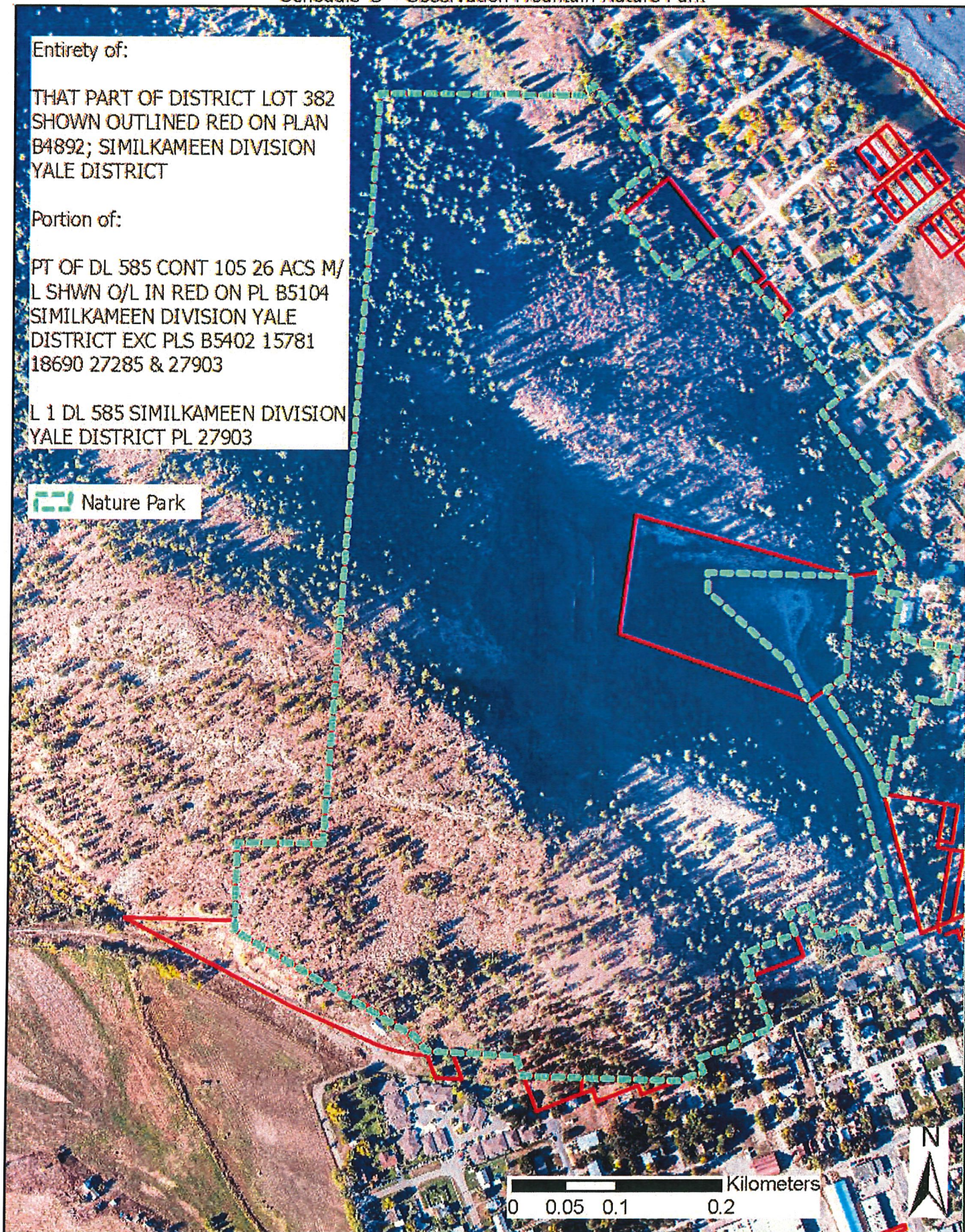
THAT PART OF DISTRICT LOT 382  
SHOWN OUTLINED RED ON PLAN  
B4892; SIMILKAMEEN DIVISION  
YALE DISTRICT

Portion of:

PT OF DL 585 CONT 105 26 ACS M/  
L SHWN O/L IN RED ON PL B5104  
SIMILKAMEEN DIVISION YALE  
DISTRICT EXC PLS B5402 15781  
18690 27285 & 27903

L 1 DL 585 SIMILKAMEEN DIVISION  
YALE DISTRICT PL 27903

 Nature Park



Schedule 'C' - Grasslands Nature Park




Portions of:

PT OF DL 585 CONT 105 26 ACS M/L  
SHWN O/L IN RED ON PL B5104  
SIMILKAMEEN DIVISION YALE  
DISTRICT EXC PLS B5402 15781  
18690 27285 & 27903

PT OF DL 495 SHWN ON PL B2093  
SIMILKAMEEN DIVISION YALE  
DISTRICT EXC PLS B5146 B5147  
B6314 7267 27381 KAP61265  
KAP64475 KAP67245 & KAP67367

Entirety of:

L 1 DL 495 SIMILKAMEEN DIVISION  
YALE DISTRICT PL KAP71087

 Nature Park

0 0.1 0.2 0.4 Kilometers



Entirety of:

PCL B (DD J64043) OF L 2 BK 3 DL  
380 SIMILKAMEEN DIVISION YALE  
DISTRICT PL 586


L 14 BK 3 DL 380 SIMILKAMEEN  
DIVISION YALE DISTRICT PL 586

L 4 DL 380 SIMILKAMEEN DIVISION  
YALE DISTRICT PL KAP61706

Portion of:

L 3 BK 4 DL 380 SIMILKAMEEN  
DIVISION YALE DISTRICT PL 586

L 4 BK 4 DL 380 SIMILKAMEEN  
DIVISION YALE DISTRICT PL 586

 Nature Park

